

DURALUXE POWDER COATED PANELS FLAMMABILITY TEST PASSED

DURALUXE PANELS ARE THE ONLY SUBLIMATION PANELS IN THE MARKET THAT HAVE ACHIEVED A "CLASS-A FIRE RATING".

What "Class A Fire Rating" means and why it's important

This fire rating applies to how well a particular wall covering is able to resist fire and smoke propagation in the event of fire exposure. While every wall covering will burn if exposed to extreme enough fire conditions, a Class-A Fire Rating provides a quantitative and qualitative measure of a material's capacity to resist fire. There are three classifications ranging from A through C. "A" representing the best.

Brief Origin of the Rating

Fire classifications for aluminum panels are based on the ratings that are applied to other types of building materials, such as roof coverings and interior walls. Wall coverings are guided by the same fire rating criteria as other products, so understanding how ratings apply to wall coverings enables us to apply the same concepts on other materials being used in a project.

Specifics on the Meaning of Class A

All wall coverings must undergo rigorous testing to be certified according to NSF/ANSI 342. To qualify, a product must be able to demonstrate specific burning characteristics that are common to other types of building materials. This classification system measures how fast the fire spreads and how far the fire travels during the test. For example, the testers hang a sample of the Duraluxe Panel that is in a test area. Gas flames are then applied to the surface of the material to test the FSR (flame spread rate).

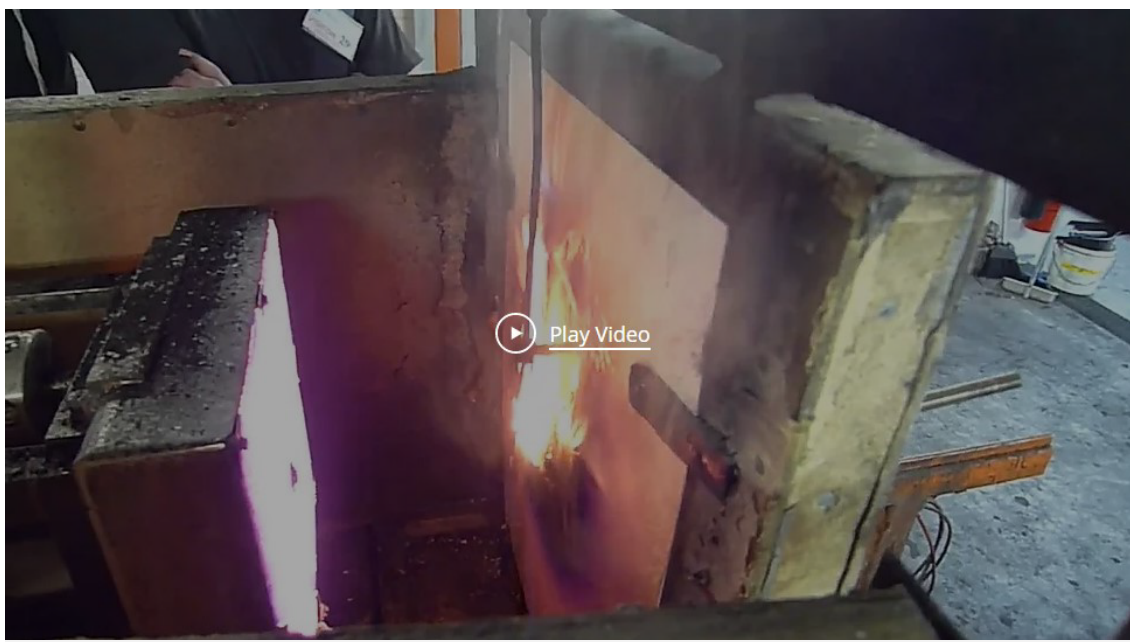


2:00 : No flame spread



3:00 to 9:00 : No flame spread; light smoke; white intumescence @ torch area

The less the fire spreads across the panel, the lower the score will be and the better classification the panel will have. Class-A has an FSR of 0 to 25, making it able to withstand fire exposures longer than Class-B or Class-C.



COMPETITORS LIQUID COATED PANELS FLAMMABILITY TEST FAILED

MANUFACTURER*	Decoral System USA Corp.	
SPECIMEN DESCRIPTION*	Aluminum sheets	
TEST RESULTS		
Test Date	3/2/20	
Test Operator	Joseph Martinez	
Flame Spread Index (FSI)	10	
Smoke Developed Index (SDI)	40	
Class	Flame Spread Index	Smoke Developed Index
A	0-25	0-150
B	26-75	0-450
C	76-100	0-450

Conclusion

When non-flammability and fire safety in a project are priorities, using Duraluxe Panels with a fire rating of Class A will not only provide peace of mind, but potentially diminish actual liability costs. Duraluxe panels are the ideal solution for elevators, hospitals, restaurant kitchens, cruise ships, hotels, schools and countless other applications.

Contact us today to become an authorized Duraluxe Distributor or Lab.

Richard Dettman
Director of Sales



CONTACT US
(954) 323 - 4907
info@duraluxepanels.com